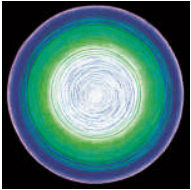




Mari Mendoza
Healing Arts



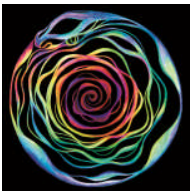
Mandalas – Angel Healing

This is Archangel Raphael. It is said that if you focus this particular mandala over someone that is critically ill, you can help shift what is happening.



Mandalas – Green Man

The Green Man is the epitome of the nature God, reminding us of Mother Nature. Personifies the Spirit of Nature. Magical symbol.



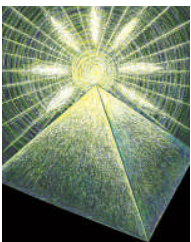
Mandalas – Rebirth

This mandala signifies the continuing cycle of death and rebirth. This symbol is transformation.



Mandalas – St. Germain

Maltese Cross symbolizes the Templar Cross and St. Germain. The violet flame is represented by the pink of love, blue of power, and violet of transmutation which combines to create healing, cleansing, spiritual transformation, and transmutation.



Mandalas – Solar Disc

This was a vision from a shamanic journey to Lake Titicaca in Bolivia and the Solar Disc over the Island of the Sun.



Mandalas – Crystalline Woman

This mandala came from a vision during meditation with Zaba, the Crystal Skull on 10/10/10 in Arkansas. Zaba is a big (100 pounds) crystal skull – her keeper is Maya Massur.

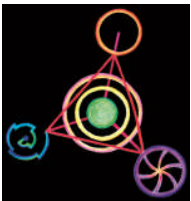


Mari Mendoza
Healing Arts



Crop Circles – Healing Star

Healing Star is the pentagram, a talisman for good health. This particular crop circle, a Pythagorean symbol of well-being, became the focus of many reports associated with healing. Area: Bourton, U.K., 1997.



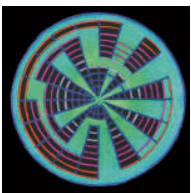
Crop Circles – Tetrahedron

The Tetrahedron is the basic sacred geometry of all life. The hidden geometry is a 5:6:7 relationship. The significance means that the harmony of life is able to exist here. The geometry of the soul. Area: Barbury Castle, U.K., 1991.



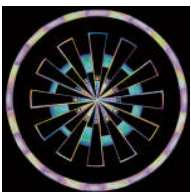
Crop Circles – Rainbow Star

The Rainbow Star is the three trinity, the ultimate expression of triad. It represents the highest achievement of any endeavor, the power of nine. Old Bury Fort, Cher Hill, U.K., 1999.



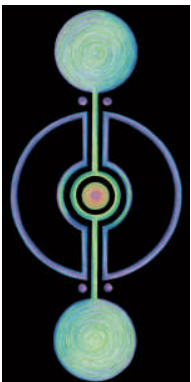
Crop Circles – Color Frequency

This is a mathematical formula for Phi for the golden section. Phi is a revered proportion for sacred geometers. It is found in all living things, governing growth and distribution patterns. Many see this as a calling card left by the breath of God as He/She breathes life into every living thing. Wiltshire, U.K., 2010.



Crop Circles – August Sunburst

Sacred energy of twelve. This crop circle remains the hologram of itself, even after it was harvested. Temple Farm, Wiltshire, U.K., 2011.

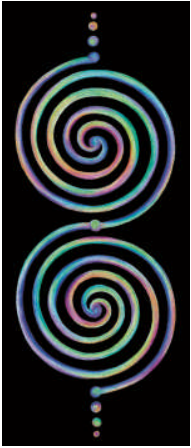


Mandalas – Venus

This is the crop circle that the EarthKeeper group went to on the Sacred Britain Tour. Said at the time that a lineup of planets, including Venus, created powerful gateway of balance. Cooks Plantation, N.R., Wiltshire, U.K., 2011.

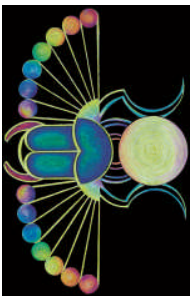


Mari Mendoza
Healing Arts



Crop Circles – Balance

This crop circle is a visual of the geospiral of balance, evidence in the sacred sites. Windmill Hill, Wilts, U.K.



Crop Circles – Scarab

This scarab represents the death and rebirth cycle where something new comes from the breaking down of the old. East Field, Alton Barnes, U.K., August 2005.



The Goddess Tara

The Goddess Tara represents the Divine Mother in Tibet.